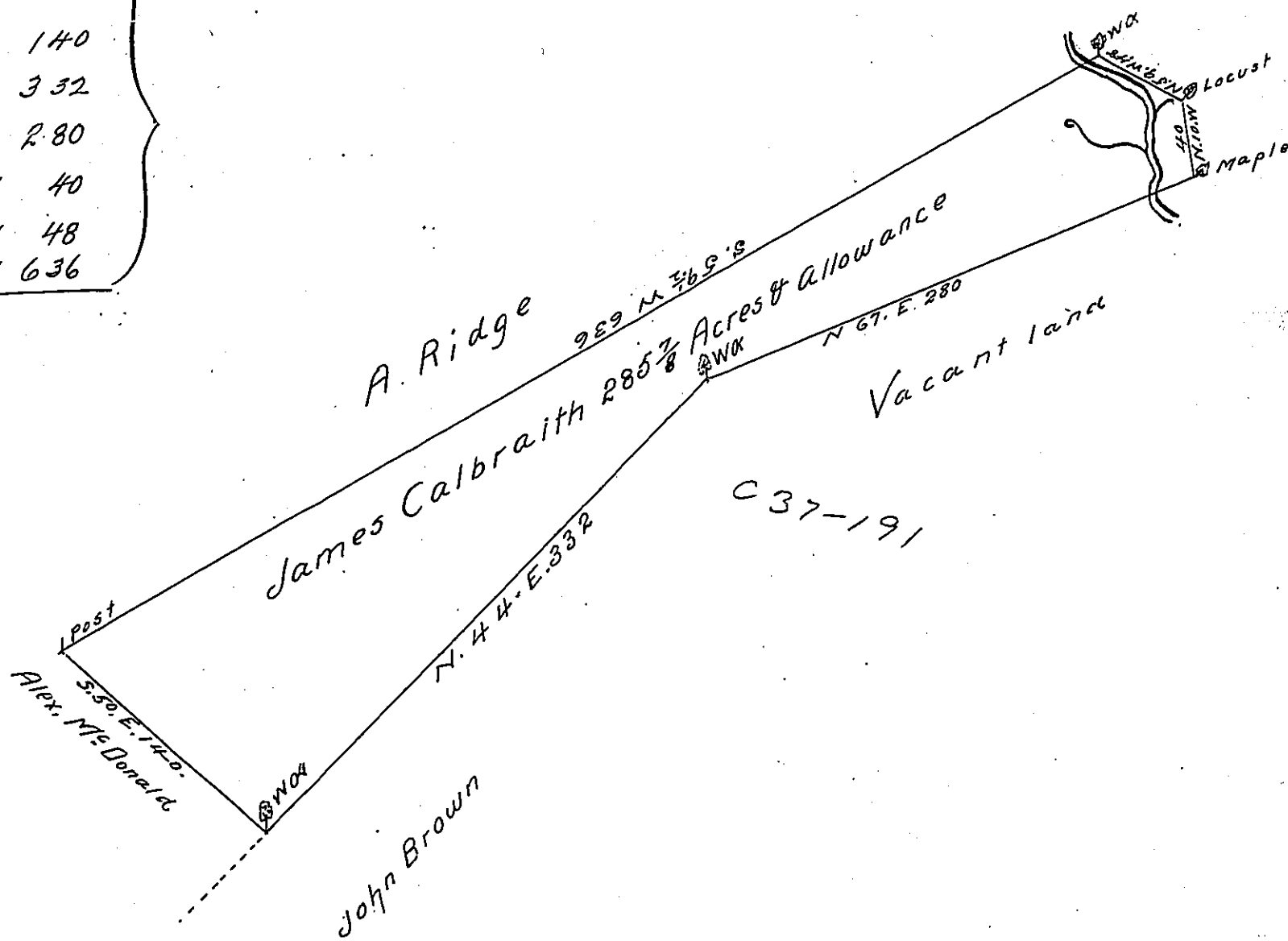


Courses & Distances

S 50 E 140
 N 44 E 332
 N 67 E 280
 N 10 W 40
 N 59 W 48
 S 57 1/2 W 636



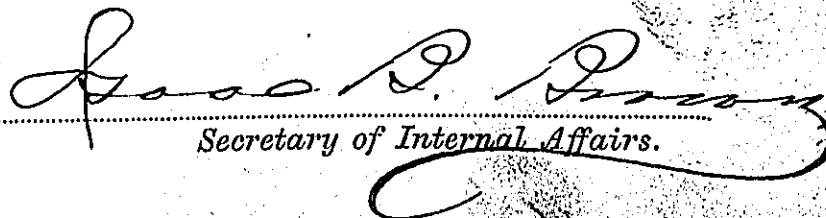
The Draught of a tract of land situate in Wayne township
 Cumberland County Containing two hundred & eighty five
 acres & nine tenths & the usual allowance of Six pCent for
 roads &c. surveyed July the 1st 1785. In pursuance of a Warrant
 to James Calbraith from the Hon^{ble} the Vice president of the
 Supreme Executive Council Dated at Philad^a. Feby the 2^d 1785

W^t. 340

Jas Harris D.S.

John Lukens Esqr.
 Survr. Genl.

IN TESTIMONY that the above is a copy of the original remaining on file in
 the Department of Internal Affairs of Pennsylvania, made
 conformably to an Act of Assembly approved the 16th day of
 February, 1833, I have hereunto set my Hand and caused
 the Seal of said Department to be affixed at Harrisburg,
 this twenty seventh day of April 1904


 Secretary of Internal Affairs.